

ZHONG/ /DING

HERMOSA

100%EXTRAFINE MERINO WOOL

6/26Nm

18.5µm 美丽诺羊毛
18.5µm Merino Wool

多元色组
Vibrant Color Combination

HERMOSA

6/26Nm
100%超细美丽诺羊毛
100%Extrafine Merino Wool

HERMOSA



手洗
Hand Wash



请勿漂白
No Bleach



低温熨烫
Iron Low



干洗
Dry Clean



平摊晾干
Dry Flat

成份：

100%超细美丽诺羊毛*

*18.5µm 美丽诺羊毛

支数及颜色：

6/26Nm - 5针 - 32 色



了解更多

Composition:

100%Extrafine Merino Wool*

*18.5µm Merino Wool

Count & Color:

6/26Nm - 5gg - 32 Colors



Learn More

后整理：

在两次洗缩过程中，使用专用助剂可以获得更佳的手感。第一次水洗旨在清除纺纱时使用的和毛油和染色过程中遗留的浮色。第二次洗涤主要用于调整织物的手感。以下后整理方法只供参考，可根据需要的手感调整洗涤剂用量、浸泡时间及转动时长。

水温：35°C **浴比：**1:25

第一次水洗：

根据衣物重量加入1-2%的洗涤剂，浸泡10分钟后转动1-2分钟，最后进行漂洗及脱水。

第二次水洗：

根据衣物重量加入8-10%的柔软剂，浸泡60分钟后适时转动。最后进行漂洗3-5分钟后脱水，并在75°C下标准转笼烘干（浅亮色衣物建议60°C）。

色牢度：

若选用颜色对比强烈的条纹织物，请注意特别的色牢度要求。

备注：

色卡内所有颜色均可提供样纱服务。

定制组合色，如三个颜色均选自 Trinity 色卡，则每色组起订量为3KG，单色组少于50KG 将加收20% 附加费；如客户定制色，每股散毛染色最低起订量为40KG/色，绞纱染色最低起订量为3KG/色，单色组少于120KG 将加收20% 附加费。

Recommended Finishing:

For optimal handfeel, use the specialized detergent in the two-bath process. The first bath is aimed at removing spin finishes, sizing agents, and residual dyestuffs, while the subsequent bath refines the final fabric handfeel. The following parameters are for reference only; Adjust detergent dosage, soaking and rotation time based on the desired handfeel.

Water Temperature: 35°C **Liquor Ratio:** 1:25

First Wash:

Add 1-2% detergent by garment weight. Soak for 10 minutes, then rotate for 1-2 minutes. Finally, rinse and spin.

Second Wash:

Add 8-10% softener by garment weight. Soak for 60 minutes, then rinse for 3-5 minutes and spin. Standard tumble dry at 75°C (60°C is recommended for bright/ light colors).

Color Fastness:

For fabrics with high-contrast stripes, please pay attention to colorfastness requirements.

Remarks:

Sample yarn service is available for all colors on the colorcard.

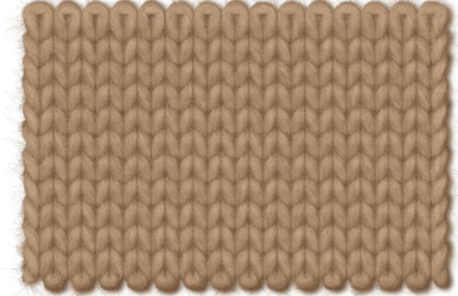
For custom color combinations, if all three colors are selected from the Trinity, MOQ per color combination is 3KG. Order below 50KG/color combination will incur a 20% surcharge. MOQ for custom colors is 40KG/color for fiber dyeing and 3KG/color for yarn dyeing; Orders below 120KG/color combination will incur a 20% surcharge.

A



EGRET
W30001

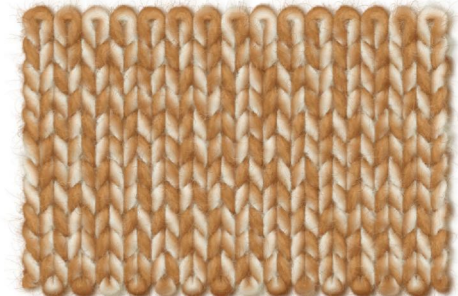
B



CHAMOIS
W30005



DRIFTWOOD
W30002



PEANUT
W30006



HICKORY
W30003



DUSK GREY
W30007



SUEDE
W30004

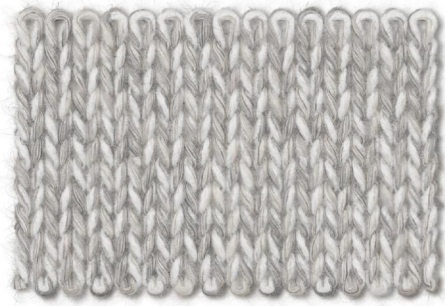


CAVEM
W30008



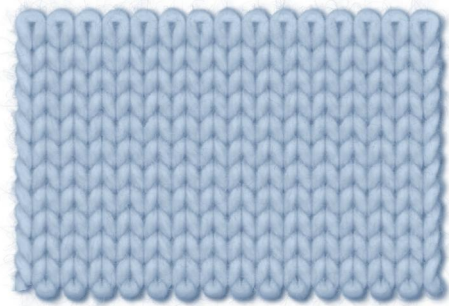
ZHONGDING

C

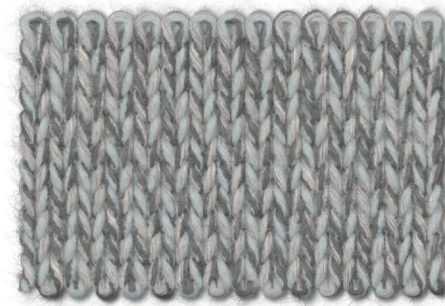


BIRCH
W30009

D



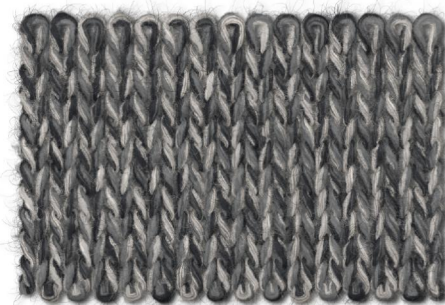
POPLIN
W30013



PEWTER
W30010



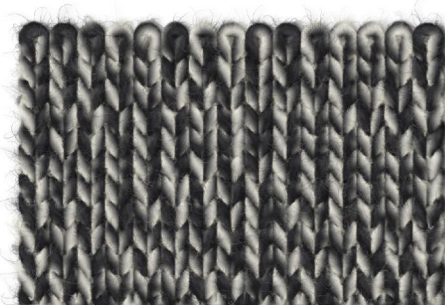
GLASSY LAKE
W30014



GRANITE
W30011



MORAINE
W30015



CARBON
W30012

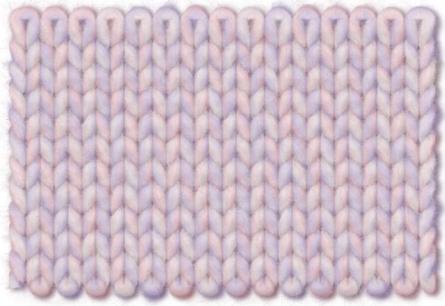


SPACE BLUE
W30016



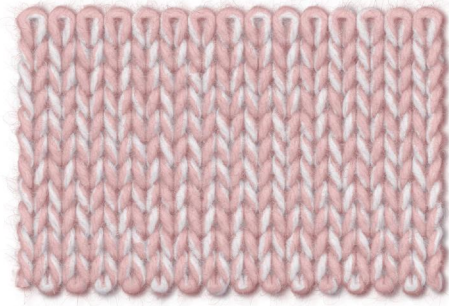
ZHONGDING

E

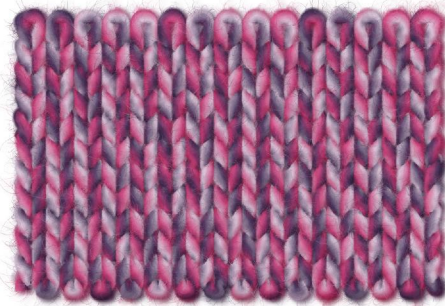


PALE LILAC
W30017

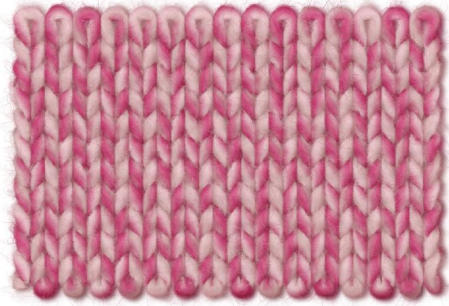
F



BLUSH
W30021



TWILIGHT
W30018



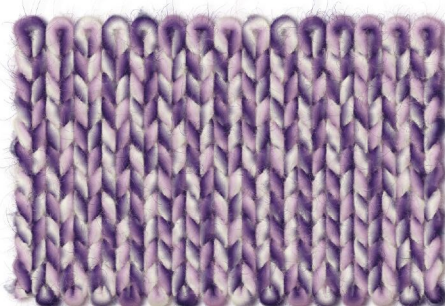
PINK LADY
W30022



VELVET NIGHT
W30019



POPPY
W30023



CRYSTAL VEIL
W30020

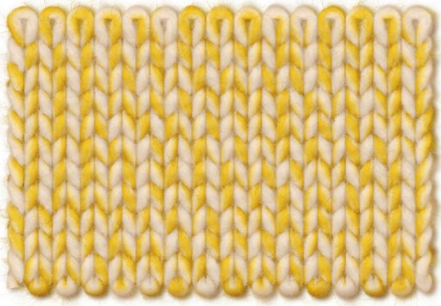


CLARET
W30024

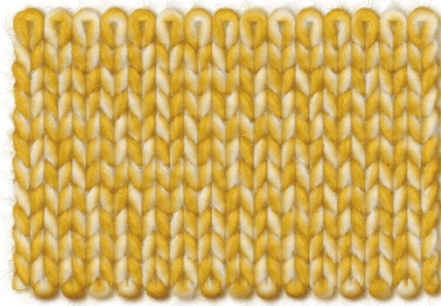


ZHONGDING

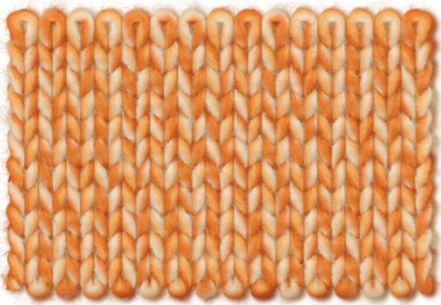
G



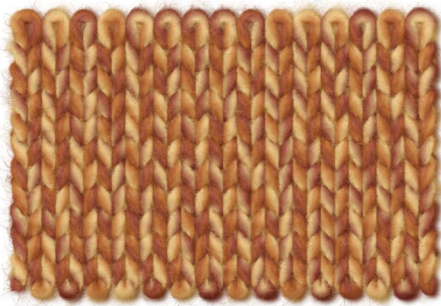
HARVEST
W30025



CITRONELLA
W30026

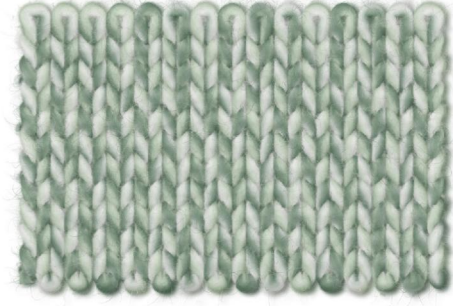


AMBER GLOW
W30027

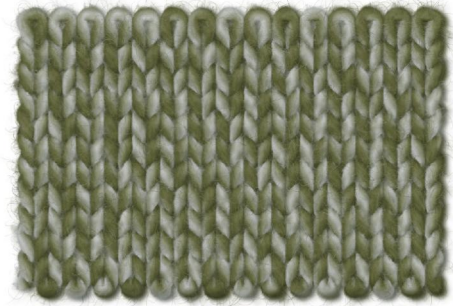


WORN EMBRE
W30034

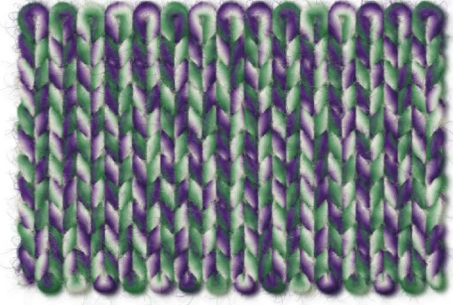
H



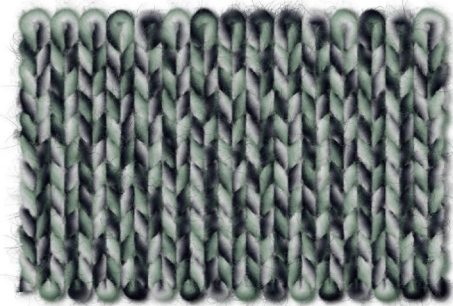
MOSSY DEW
W30029



STONE FERN
W30033



FROSTED LILAC
W30032



GARDEN
W30031



ZHONGDING

HERMOSA

New Color Code	Column#	New Color Code	Column#
W30001	A1	W30017	E1
W30002	A2	W30018	E2
W30003	A3	W30019	E3
W30004	A4	W30020	E4
W30005	B1	W30021	F1
W30006	B2	W30022	F2
W30007	B3	W30023	F3
W30008	B4	W30024	F4
W30009	C1	W30025	G1
W30010	C2	W30026	G2
W30011	C3	W30027	G3
W30012	C4	W30029	H1
W30013	D1	W30031	H4
W30014	D2	W30032	H3
W30015	D3	W30033	H2
W30016	D4	W30034	G4

认证与品牌素材支持

Certification & Brand Materials Support



其他认证
Other Certifications



支持选用指定原料进行定制
Customization available with specified materials



国际羊毛局 纯羊毛吊牌
Woolmark
Pure New Wool



防伪吊牌 | 美丽诺羊毛
Authenticity Hangtag
Merino Wool

CHINA OFFICE

- **Zhejiang Zhongding Textile Co., Ltd.**
No. 198, Hangfu Road, Chongfu Industrial Park,
Tongxiang City, Zhejiang
TEL: +86 573 8822 8888
EMAIL: service@zdtex.com

HONG KONG OFFICE

- **Zhong Ding International Development Ltd.**
Room 1007, 10/F Saxon Tower,
7 Cheung Shun Street, Lai Chi Kok,
Kowloon, Hong Kong
TEL: +852 3565 5216
EMAIL: roxanewoo@zdtex.com

JAPAN OFFICE

- **Italo-Fil Co., Ltd.**
Aoyama Green Heights 205
5-17-6 Minami Aoyama,
Minato-Ku, Tokyo 107-0062, Japan
TEL: +03 5464 2577
EMAIL: nakamura@italo-fil.co.jp

USA OFFICE

- **Zhong Ding USA**
525 7th Avenue, Suite 1008
New York, NY 10018
TEL: +917 345 9630
EMAIL: paolo.fontana@aeffefilati.com

UK OFFICE

- **Zhong Ding Int (UK) Company Ltd.**
54, Chaveney Road,
Quorn, Leicestershire,
LE12 8AD, UK
TEL: +44 780 327 7088
EMAIL: richard@zdint.co.uk

GERMANY OFFICE

- **Zhong Ding Int GmbH.**
Stolco Haus, DFC Dialog Büro,
Steinstraße 16-18,
Düsseldorf, D-40212, Germany
TEL: +39 348 155 3609
EMAIL: richard@zdint.co.uk

SPAIN OFFICE

- **Zhong Ding Int.**
Via Augusta 236, 5B,
08021 Barcelona, Spain
TEL: +34 609 804 641
EMAIL: sara@zdint.co.uk

www.zdtex.com